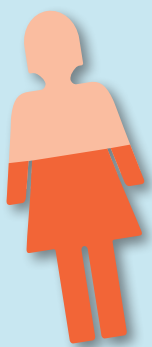


Outset has supported over **22,432** individuals across the UK, resulting in the creation of more than **4,332 businesses** and **4,808 jobs** in the last five years.



Businesses supported by Outset are more sustainable than the national average¹:

- 1** Year one – Outset 93% vs. national 93%
- 2** Year two – Outset 88% vs. national 76%
- 3** Year three – Outset 75% vs. national 61%



We are proud champions of economic equality and female empowerment, working closely with the Enterprising Women community.

60% of the businesses created thanks to Outset are run by women, three times the national average of 20% for female-led SMEs².



We help businesses overcome one of the major barriers to starting-up: access to finance.

Our Outset Finance team has distributed more than £5 million of government backed Start Up Loans since January 2014.

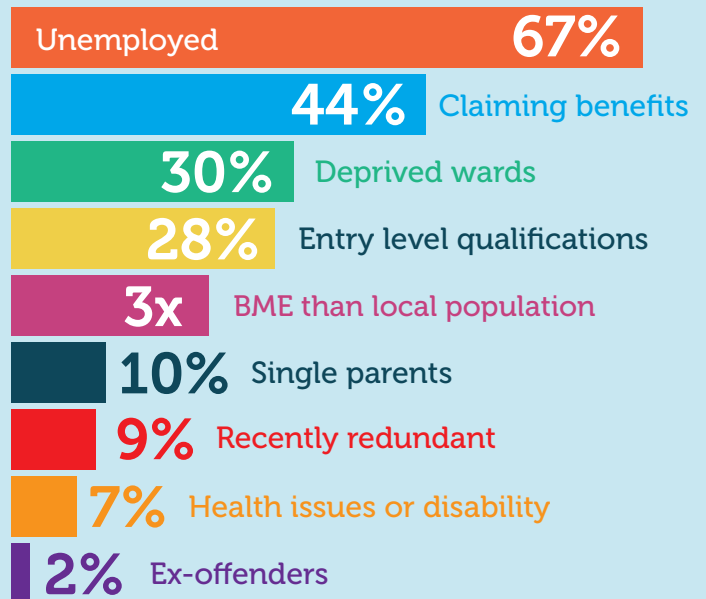
£1 = £3.36

Every £1 invested in Outset delivers at least £3.36 of social, economic and financial value according to an independent evaluation of our South West services by NEF Consulting.

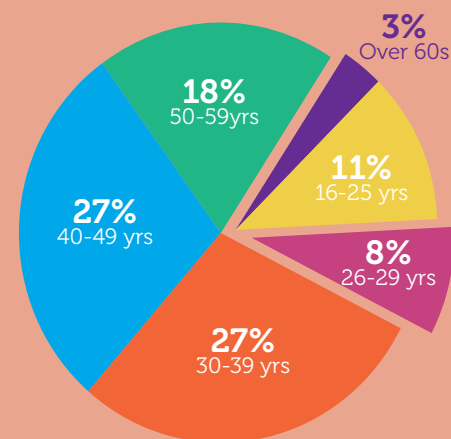
This equates to an estimated £42 million return on all our European funded projects, including a forecasted GVA of £32 million into the economy.

We have a successful track record working with isolated rural areas, deprived inner cities and coastal communities, including wards with some of the UK's highest levels of social and financial exclusion.

Our socially inclusive approach means we support people from all backgrounds, particularly focusing on those furthest from the labour market.



We support clients of all ages, tailoring our approach to engage them in the best way to meet their needs.



¹ Office of National Statistics, 'Business Demography 2014', November 2015

² Department of Business Innovation and Skills, 'Contribution of Women-led and MEG-led businesses to the UK non-financial economy', September 2015